

Kit contents

- 1x Oscillating Sprinkler
- 1x Hoselink Accessory Connector

Assembly Guide

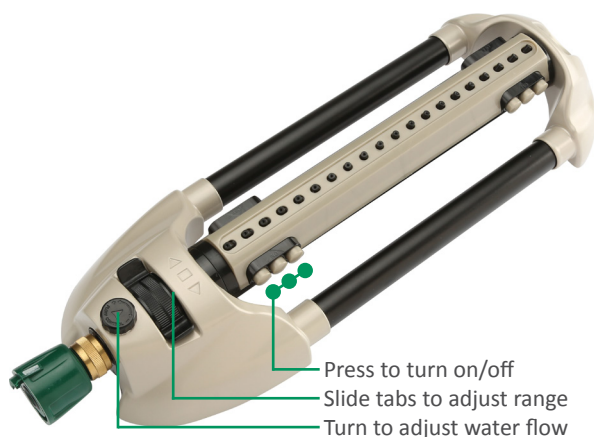
Step 1

Screw the Hoselink Accessory Connector into the sprinkler.

Step 2

Connect to a water supply by attaching your Hoselink-fitted hose end to the Accessory Connector on the sprinkler.

Components



Cleaning Tips

By following a few simple cleaning tips, your sprinkler should provide years of reliable service.

- Clean the water inlet filter by removing it and rinsing.
- Use the provided cleaning pin to clear any clogged spray nozzles. Then run water through with cleaning pin removed to flush the system.



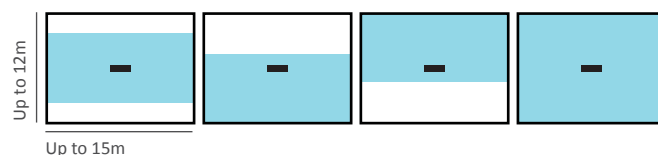
Maintenance Tips

- If sprinkler does not operate properly, remove the Cleaning Pin from the end and flush water through.
- Drain the sprinkler after use.
- Do not allow water to freeze in the sprinkler.
- Store out of direct sunlight.

Using the Oscillating Sprinkler

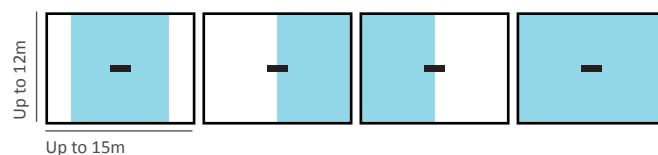
Width Control

The Oscillating Sprinkler is easily adjusted to suit any rectangular watering area.



Range Control

Slide the tabs as required to adjust the oscillation range.



Flow Control

Turn the Flow Control dial to increase or decrease water flow through the sprinkler.