

Before you begin

This product has been packaged to ensure it arrives in the best possible condition. Please be careful when unpacking. This kit contains parts that can be damaged if incorrectly assembled. Please follow instructions.



Hoselink's Heavy-Duty Hose Wall-Mounted Hose Reel has been designed and manufactured using the highest quality materials to take all the work out of watering, gardening and cleaning.

Product Features:

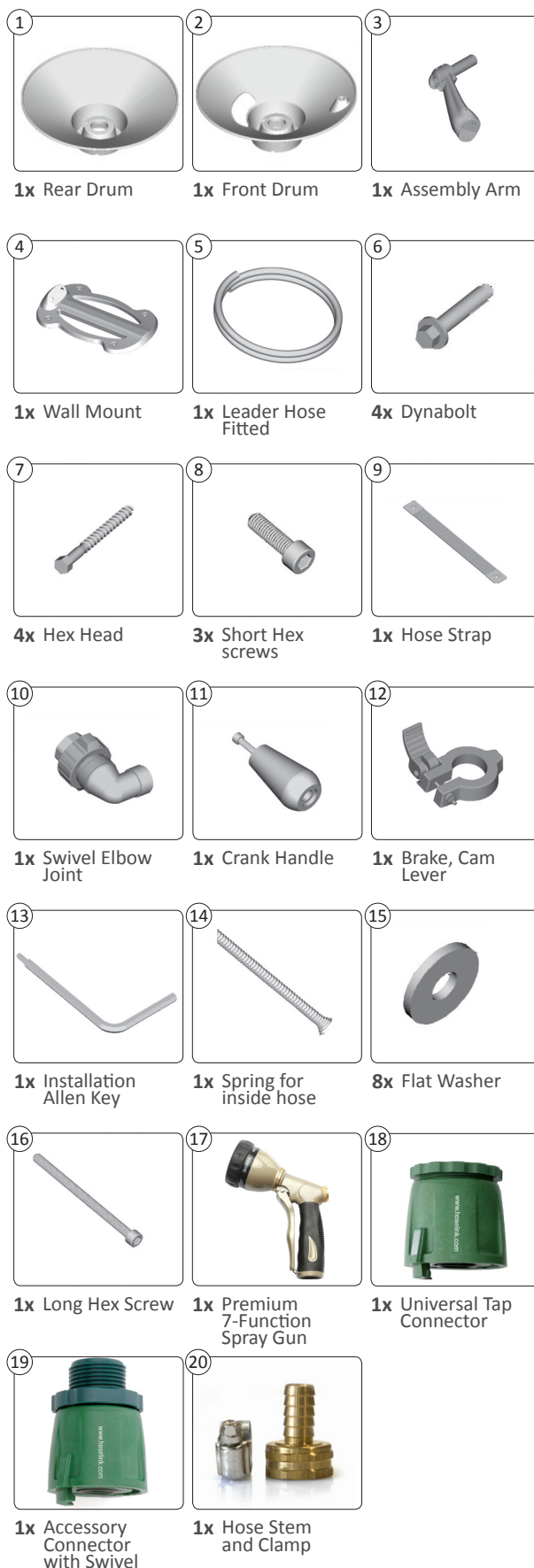
- Cam-lever braking helps with the drag of the hose when in use. When pulling the hose out ensure the brake is in the ON position then flip the lever to the OFF position to release the brake for a drag-free rewind.
- Powder coat finish in our popular taupe colour that will look great in any garden!
- Aluminum-alloy and stainless steel construction throughout provides a rustproof, long-lasting watering solution.
- Impact resistant crank handle spins freely ensuring a hassle-free rewind action
- Smartly engineered to suit both left and right handed people, simply decide which direction your reel will function when fitting your garden hose.
- Parallel or Perpendicular options available to accommodate everyone. During assembly simply install the dual-directional arm to the wall plate as required.

Important!

Before installation, please make sure you have all the parts as shown on the 'Box Contents' section, then you may start installation from step 1.

Please note: partial assembly has been completed during manufacturing for packing purposes.

Box Contents



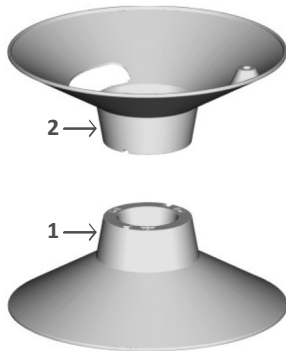
User Manual

Heavy-Duty Wall-Mounted Hose Reel | Models: 3582 / 3583

Cart Assembly

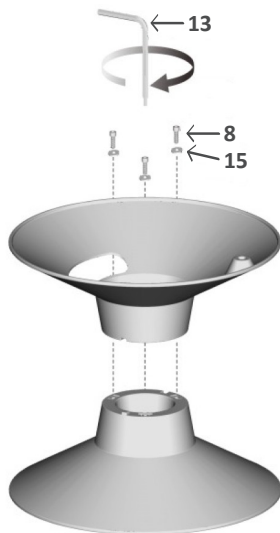
Step 1

Place the Front Drum (2) on top of the Back Drum (1). The correct alignment can be achieved once the pins and sockets are secured in place.



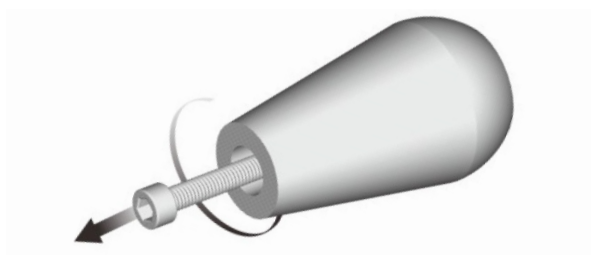
Step 2

Fasten drums together using the three Short Hex Screws (8) and put 3pcs washer (15) and the small hex end of the installation key (13).



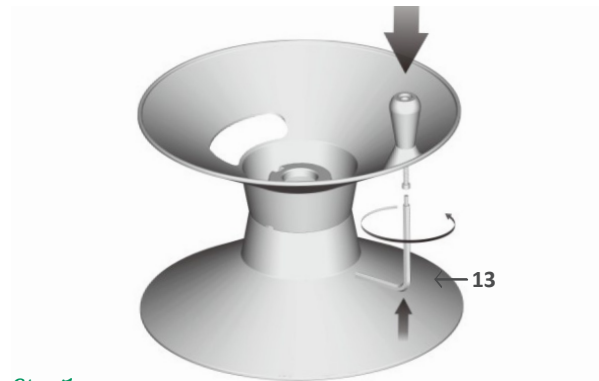
Step 3

Remove the screw from the Handle.



Step 4

Place crank handle into correct position, secure included screw in place using the Installation key (13)



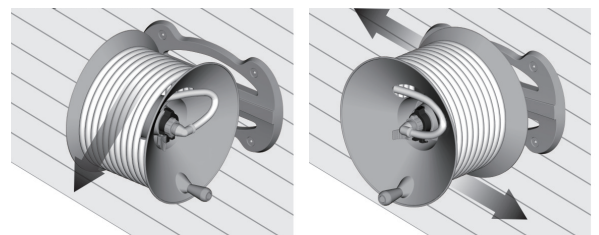
Step 5

Remove the two Hex Screws and Flat Washers from the Assembly Arm (3).



Step 6

Determine which direction you want the reel to operate.

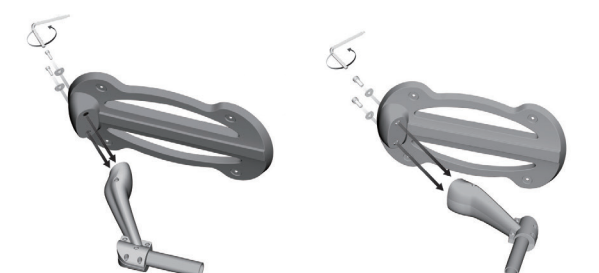


Perpendicular

Parallel

Step 7

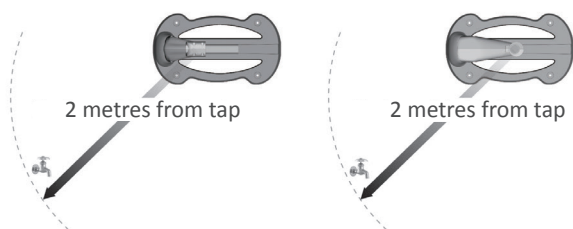
Attach the assembly Arm securely to the Wall Mount (4) using the two previously removed Hex Screws and Flat Washers.



Step 8

Locate the reel base within 2 metres from the tap.

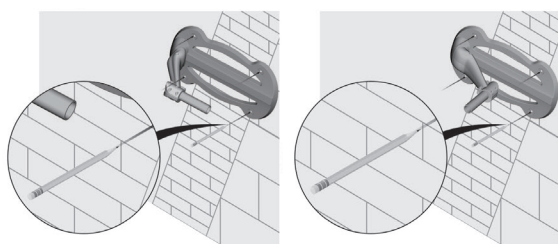
Note: Be careful that there are no other objects that may interfere with the operation of your reel.



Installation OPTION A - Masonry Walls

Step 1

Use a marker to mark the location of the four mounting holes on your wall.



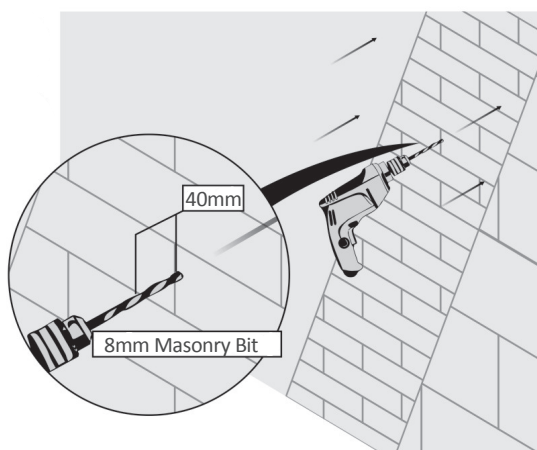
Perpendicular

Parallel

Step 2

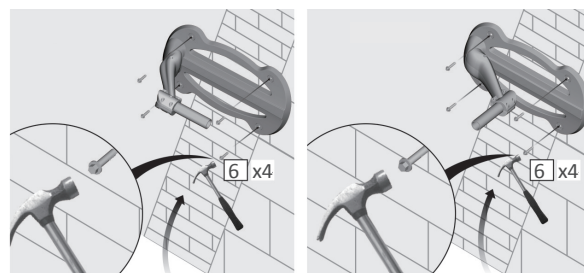
Use an 8mm masonry bit (not included) and drill 40mm deep holes at the 4 marked locations.

Tip: To ensure the holes are at the correct depth we recommend putting tape around your drill bit in order to know exactly how far to go.



Step 3

Position the Wall Mounting Base over the drilled holes and tap the four Anchor Bolts (6) through the base and into the holes in the wall.

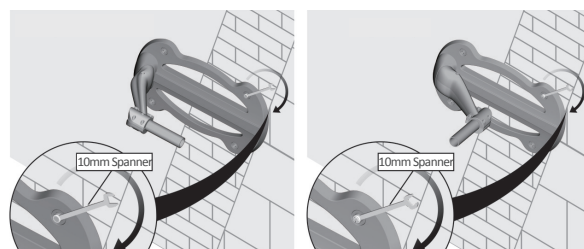


Perpendicular

Parallel

Step 4

Tighten the four sleeve anchor bolts with a 10mm spanner. **Do not over tighten.**



Perpendicular

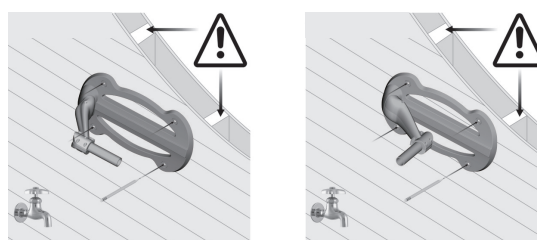
Parallel

Installation OPTION B - Stud Walls

Step 1

Use a marker or pencil to mark the location of the four mounting holes on the wall.

Note: Locate studs prior to drilling. The reel must be fastened to 2 studs.



Perpendicular

Parallel

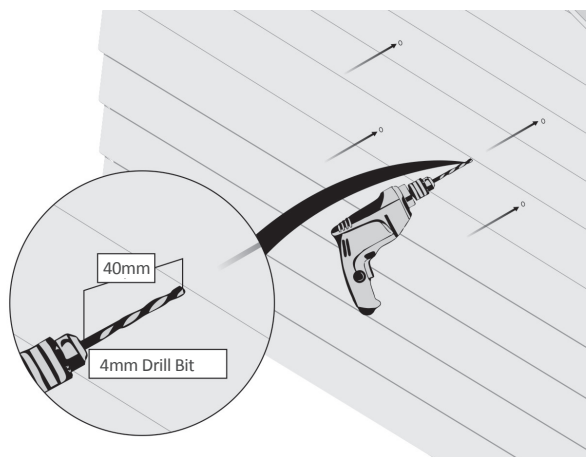
User Manual

Heavy-Duty Wall-Mounted Hose Reel | Models: 3582 / 3583

Step 2

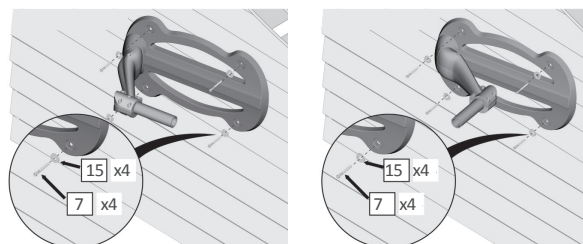
Use a 4mm drill bit (not included) and drill 40mm deep holes at the four marked locations.

Tip: To ensure the holes are at the correct depth we recommend putting tape around your drill bit in order to know exactly how far to go.



Step 3

If you are fastening to cladding, use the four Flat Washers between the wall mounting base and the cladding. Fasten the base to the wall with the four 6mmx70mm Hex Head Screws (7) and 6mm Flat Washers (15).

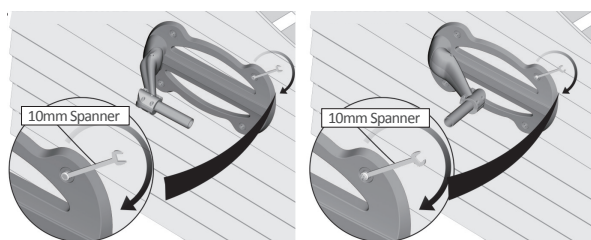


Perpendicular

Parallel

Step 4

Tighten the four 6mmx70mm Hex Head Screws (7) with a 10mm spanner. **Do not over tighten.**

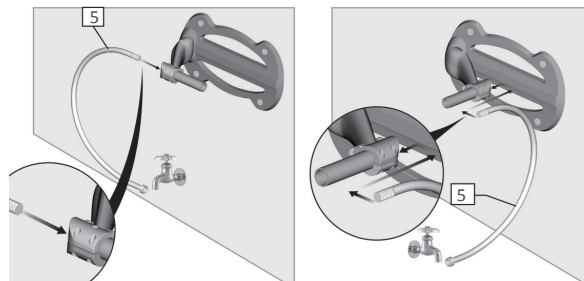


Perpendicular

Parallel

Step 5

Insert the externally threaded (male) end of the inlet hose (5) into the axle tube until it is accessible from the other side.

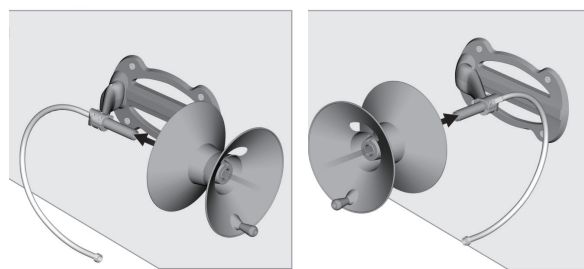


Perpendicular

Parallel

Step 6

Install the Drum Assembly onto the axle with the crank handle on the outside.

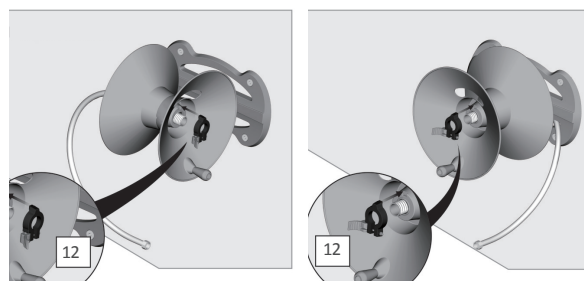


Perpendicular

Parallel

Step 7

Install the Drum Assembly onto the axle with the crank handle on the outside.

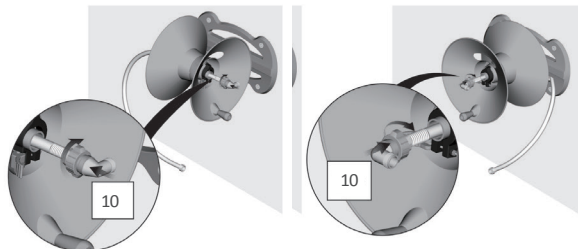


Perpendicular

Parallel

Step 8

Attach the Swivel Elbow Joint (10) to the leader hose.

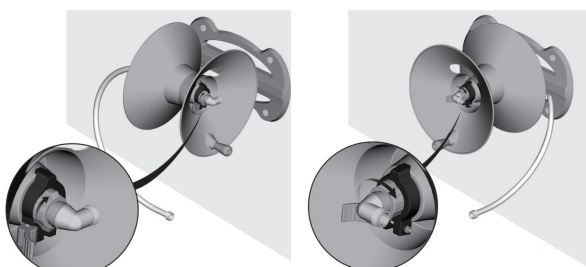


Perpendicular

Parallel

Step 9

Attach the Swivel Elbow Joint to the axle. Hand tighten firmly.



Perpendicular

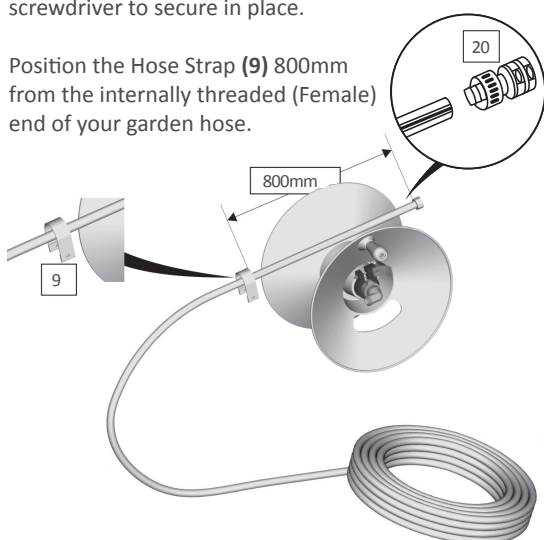
Parallel

Hose Installation

Step 1

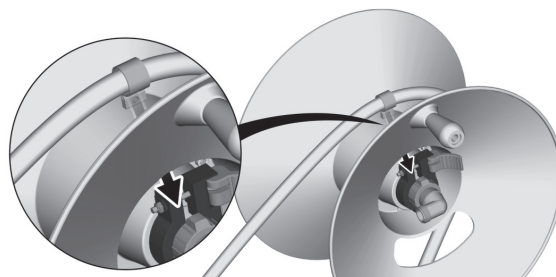
Thread hose clamp over the hose and push the stem into place (20). Tighten hose clamp using a flathead screwdriver to secure in place.

Position the Hose Strap (9) 800mm from the internally threaded (Female) end of your garden hose.



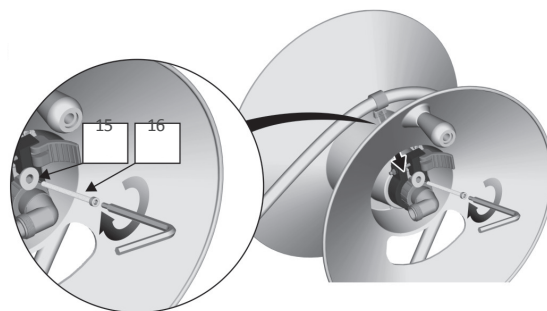
Step 2

Position the Hose strap (9) so the grommets pass through the small slot on the drum.



Step 3

Tighten the hose strap, the Long Hex Screw (16) will pass through the Flat Washer (15) and the two brass grommets on the hose strap then thread into the internal nut on the inner reel drum assembly.



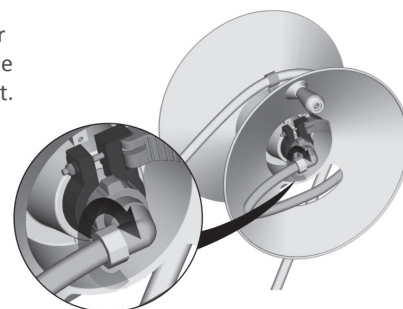
Step 4

Insert your garden hose through the large opening in the reel drum.



Step 5

Hand tighten your garden hose to the Swivel Elbow Joint.



User Manual

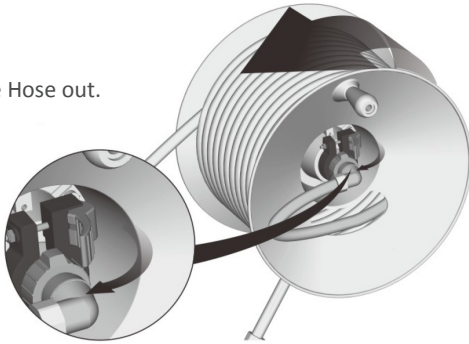
Heavy-Duty Wall-Mounted Hose Reel | Models: 3582 / 3583

How to use the Cam-Lever Brake

As you pull the hose from the reel, the cam-lever brake will prevent the reel from “free-spinning”, unrolling more hose than you want. The brake can be turned ON and OFF using the lever.

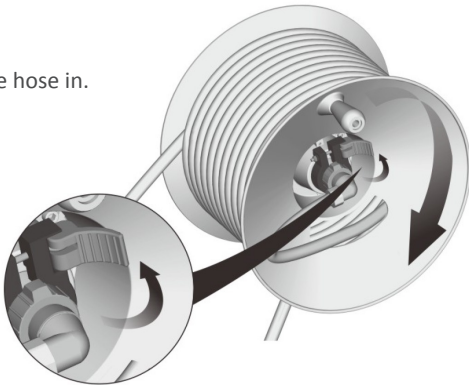
Brake on:

Pulling the Hose out.



Brake off:

Reeling the hose in.



How to adjust the Cam-Lever Brake

Step 1: Place the Cam-Lever in the ‘ON’ position.

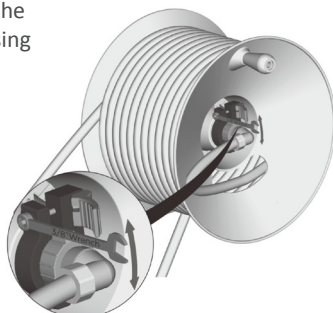
Step 2: Pull enough hose off the reel to test the amount of drag created by the Cam-Lever brake.

Too little drag: The reel will continue to unspool hose after you’ve stop pulling.

- Tighten the nut on the Cam-Lever Brake using a 10mm spanner.
- Adjust 1/4 turn of the spanner.
- Test again.

Too much drag: It will be difficult to pull hose off the reel.

- Loosen the nut on the Cam-Lever Brake using a 10mm spanner.
- Adjust 1/4 turn of the spanner.
- Test again.



Warranty

Hoselink’s mission is to offer excellent products and exceptional after sales support. Your hose reel carries a 3 years warranty from the date of purchase. Should you require trouble-shooting advice or after sales care, please contact us via telephone or email and our Customer Care team will assist you.

Our goods come with guarantees that cannot be excluded under the Australian Consumer Law. You are entitled to a replacement or refund for a major failure and for compensation for any other reasonably foreseeable loss or damage. You are also entitled to have the goods repaired or replaced if the goods fail to be of acceptable quality and the failure does not amount to a major failure.

If a Product has a minor defect, we will provide a repair or offer you a replacement or a refund. If you think that a Product is defective you should contact our Customer Care team within 14 days and a Customer Care representative will assist you. A photo may be requested to assist with the assessment of your claim.

Where a Product is defective and needs to be replaced or repaired, return shipping will be arranged at the expense of Hoselink. This must be arranged with Customer Care prior to the item being returned. If a Product is replaced, your replacement Product becomes your property and the returned Product becomes our property. When a refund is given, the returned Product becomes our property.

Should you ever require any assistance with your Hoselink product, please do not hesitate to contact us for a speedy resolution.

FOR ALL WARRANTY CLAIMS, PLEASE CONTACT CUSTOMER CARE:

Tel: **1300 900 617**

Email: **hello@hoselink.com.au**



Website

www.hoselink.com.au

Email

hello@hoselink.com.au

Telephone

1300 900 617

Office address

1/108 Old Pittwater Rd, Brookvale NSW 2100, Australia

Mailing Address

PO Box 6671, Frenchs Forest NSW 2086