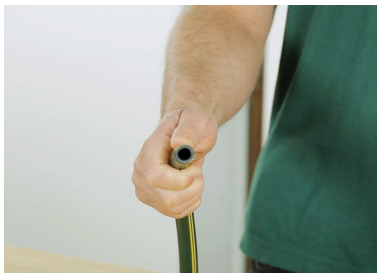


The **Hose Connector with Flow Control** makes watering easier because it creates a tap at the spray end of the hose. This makes it quicker to stop, start or adjust the water flow without having to return to the tap.

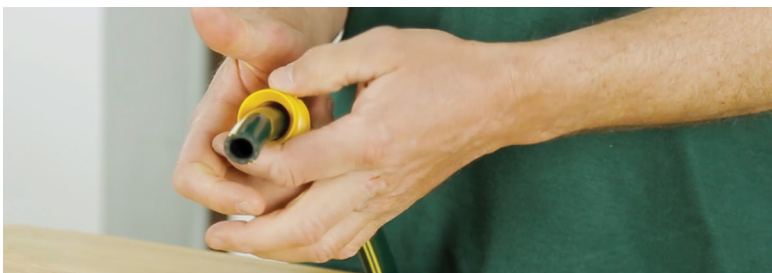
Step 1

Cut the hose end straight with sharp secateurs or a knife.



Step 2

Slide the yellow nut up the hose.



Step 3

Attach the white split ring flush with end of hose.



Step 4

Soften 2cm of the hose end in boiling water for about 15 seconds.



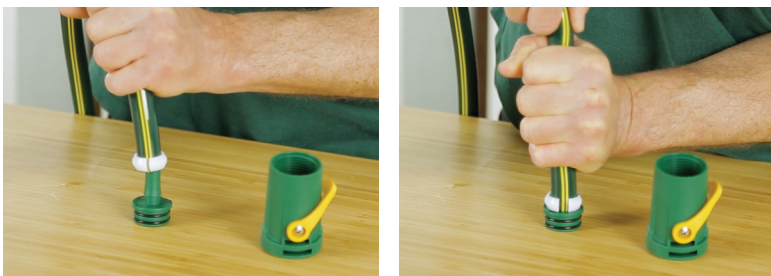
Step 5

Remove the internal stem from the fitting.



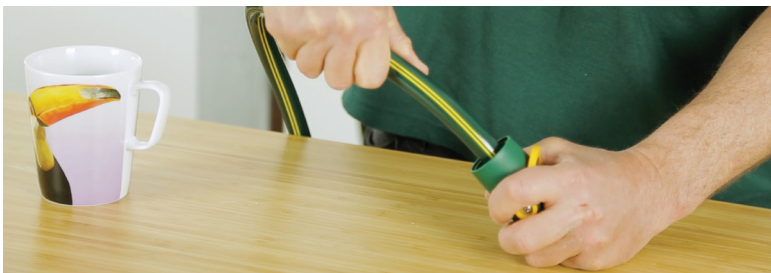
Step 6

Put the stem on a table or the ground and push the hose onto it, ensuring the hose sits all the way at the bottom.



Step 7

Insert stem back into the fitting.



Step 8

Tighten the yellow nut.



The **Hose Connector with Flow Control** is designed to be used at the spray end of the hose. Water must flow through and out of this connector. This connector will leak if water flow is directed the wrong way.